



## Elbor- ECO (Bronze) welding wires

The Elbor-ECO (Bronze) wires are manufactured by using selected rods from their chemical properties.

The surface is coated with a film BRONZE base. The colour is shiny gold. The main difference from the traditional coppered wire is the specific chemical solution used in the bath process: combination of copper sulphate, zinc and stannum. Such mix releases a clearer weld bead than the standard copper wire and the exclusive manufacturing process allows to obtain the surface of the wire very compact and clean.

The Elbor-ECO finds specific application in the robotic welding process with a very high power density as well as a high-speed drag.

### Strengths :

#### • HIGH POWER DENSITY

The special coating with the action of particular concentrations of the alloying elements of steel base, permit the use of the ECO (Bronze) wires with maximum power density up to 25-30% over normal copper wires.

#### • PERFECT STABILITY OF THE ARC

The special production process and the lower amount of copper on the ECO (Bronze) wire surface, allow minimum spattering actually possible in an automatic welding process.

#### • LOWER CONSUPTION OF WIRE GUIDE-ROLLERS

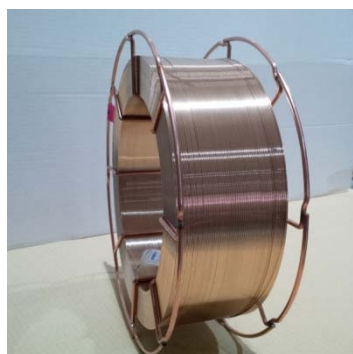
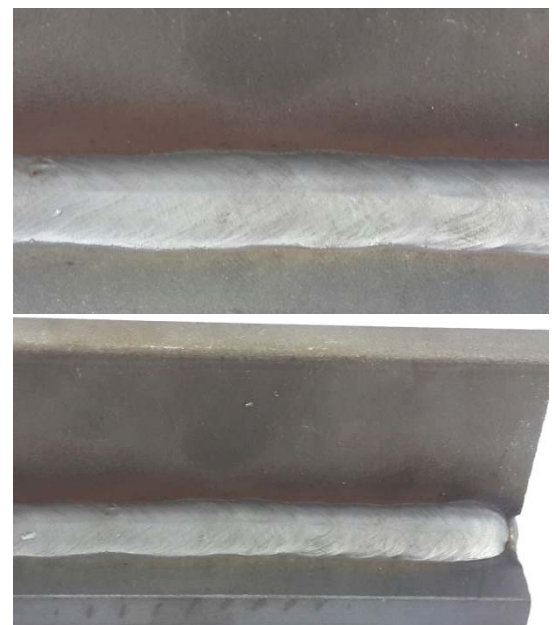
The user will experience a significant reduction in the consumption of tips and guide rollers. All this will lead to reduce maintenance costs and increase the welding productivity.

#### • CLEANER WELD RESULT

#### • LONGER RESISTANCE AGAINST CORROSION

The Elbor-ECO (bronze) wires are available in any type of spool and Bulk Pack for mild steel and low alloy wires

Elbor Bronze Welding Samples:



Yours Faithfully  
**ELBOR Srl**  
Research & Development Department